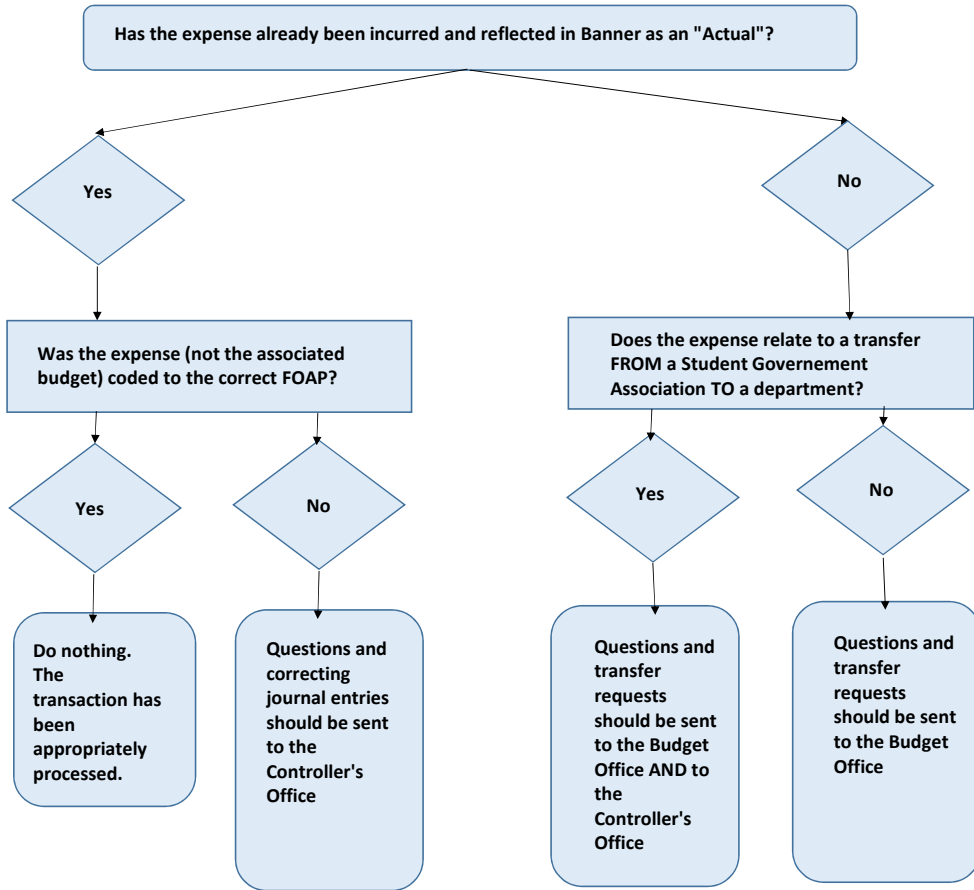


## Reclassifications: Is it a Budget adjustment or Accounting adjustment?

*Query Results*

Account	Account Title	FY17/PD14 Adopted Budget	FY17/PD14 Budget Adjustment	FY17/PD14 Adjusted Budget	FY17/PD14 Temporary Budget	FY17/PD14 Accounted Budget	FY17/PD14 Year to Date	FY17/PD14 Encumbrances	FY17/PD14 Reservations	FY17/PD14 Commitments	FY17/PD14 Available Balance
71790	Real Estate Tax	0.00	0.00	0.00	0.00	0.00	( 6,500.00)	0.00	0.00	0.00	6,500.00



**Budget Office:** monette\_salud@emerson.edu; jeffrey\_chan@emerson.edu

**Controller's Office:** accounting@emerson.edu